



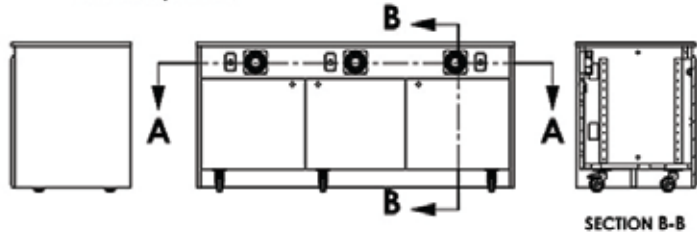
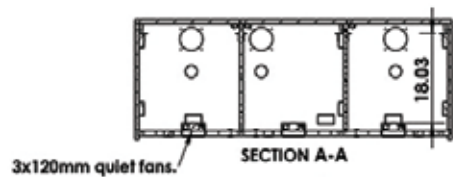
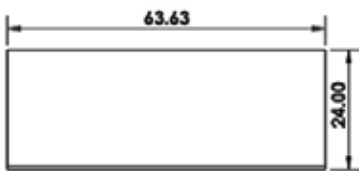
CR3000EX is a minimalist design tech-credenza designed for business conference room environments. Featuring three rack bays with twelve rack spaces each and a dedicated heat exhaust fan per bay. Innovative hidden lock design allows for a seamless look while still providing security for your electronics. Can be butted together to span a room or wall.

Standard Features

- Clean minimalist design
- Hidden locks and handles on front
- 3 bays 12U front and rear rack rails 18 3/4" deep
- Locking front and rear doors
- Scratch resistant thermowrap surfaces
- **FAN** Quiet cooling fan
- Many color options
- Compatible with our mounts (Requires drilling)
- 4" heavy duty ballbearing casters, 2 locking
- Can be butted together to span a room or wall
- Compatible with our video conference tables

Options

- **PM2-D** Dual monitor mount (42"-70" – 200 lbs total max)
- **PM2-XL** Single XL monitor mount (60"-90 –200 lbs max)
- **PB** Six outlet power bar with 10 ft. cord
- **TVCB** Camera bracket for freestanding or wall mount TV's
- **CS** Wall mount camera or codec shelf
- **9107** Lacing bar (19" long)
- **9031** Vented metal shelf
- **9041** Sliding shelf
- **9052** Sliding drawer
- **MAGKEY** Additional key for hidden locks
- **CR-A-DR** Credenza acrylic door
- **LEV4AX6** 6x Levelers for non-mobile applications



Specifications

Model: CR3000EX
Width: 63 5/8"
Depth: 24"
Height: 30 1/8"

Finishes



Other finishes are available. Check website.

The information contained in this drawing is the sole property of Audio Visual Furniture International. Any reproduction in part or as a whole without the written permission of Audio Visual Furniture International is prohibited. AVFI can build or modify stock configurations to suit customer specifications. Please contact us to discuss how this service can help meet your needs. Some quantity restrictions may apply. Specification subject to change without notice. Computers, cameras, monitors, etc. are shown to illustrate product usage and are not included unless otherwise noted.